



A SCHOOL RIDE LLC
Academic Year 2018-2019

“N. SCOTTSDALE/N. PIMA ROUTE”
TO
ARCHWAY CLASSICAL ACADEMY
& SCOTTSDALE PREPARATORY ACADEMY

- **ROUTE DESCRIPTION:** The “N. SCOTTSDALE/N. PIMA ROUTE” to Archway Classical Academy & Scottsdale Preparatory Academy accommodates students living on the north side of the schools, from Scottsdale Rd & Dixileta to Grayhawk to Pima & Legacy. It accommodates students in grades K-8th. See route map included in this package.

- **PICKUP/DROPOFF POINTS:**

1. **Scottsdale Rd & Dixileta:** (Sonrise Church parking lot-NE corner of intersection)
2. **Scottsdale Rd & Pinnacle Peak:** (Wells Fargo parking lot-NE corner of intersection)
3. **Pima & Pinnacle Peak:** (Walgreen’s mall-Starbucks parking lot-NE corner of intersection)
4. **Thompson Peak & Hayden:** (Boys’ & Girls’ Club-SW corner of intersection)
5. **Pima & Legacy:** (AJ’s Parking Lot-First America Title-SE corner of intersection)

The route subsequently continues through E. Bell Rd. to the schools. Transportation is provided through a 28- to 33-passenger shuttle.

- **DAILY TRIPS**

- One trip in the morning to both schools, to accommodate students in grades K-8th.
- Two trips in the afternoon to both schools, to accommodate students in grades K-8th.
- The last afternoon trip will depart from the schools **NO LATER THAN 5:00pm**. The last afternoon trip does **NOT** accommodate after school programs that end **AFTER 5:00pm**.

- **PRICING**

- \$2,500.00 annual cost per student, round trip (10 monthly installments of \$250.00 per month, for the 10 months of the school year). An 8% discount is available for siblings, applicable to all siblings.
- This is a new route: Reservations for students wishing to travel “round trip” will be accepted on a **“first-come, first-served”** basis.

- **ROUTE REQUIREMENTS**

- In order to materialize for AY 2018-2019, the N. SCOTTSDALE/N. PIMA ROUTE needs a **minimum of 25 round trip students.**
- The **maximum capacity** of this route is 32 round trip students in 1 shuttle.
- An **Annual Transportation Service Agreement** is required from the parents of every student.
- A **deposit of \$250.00** (or the discounted equivalent for siblings) is required to enroll a student in the shuttle service.

- **ENROLLMENT PERIOD**

- Enrollment for round trip transportation will commence on **Monday, March 12, 2018 and will end on Sunday, April 22, 2018.** In the event this route fills up to its designed capacity of 32 students, a 2nd shuttle may be placed in service for this route, depending on the number of excess students beyond the designed capacity of 32.

- **CONTACT INFORMATION**

Please contact us via phone or e-mail for more information:

A School Ride LLC

Tel: (480) 515-0077

Georgina Eckman: geckman@aschoolride.com

Dale Eckman: deckman@aschoolride.com

A SCHOOL RIDE LLC

WHO WE ARE

A School Ride LLC was born in August 2009, from our need to transport our daughter to and from BASIS *Scottsdale*. Driving Kristen to and from school, 20 miles away, twice daily, was not an option for two working professionals.

While carpooling was a possibility, our primary concern was liability insurance in case of an accident. Knowing that most non-commercial drivers carry close to the statutory minimum insurance coverage for their vehicles, we were unwilling to risk a worst case scenario of an accident while carpooling to school with 2-3 other students.

We formed the LLC, purchased a minivan and commercial auto liability insurance, hired a commercial driver, and started this service with 7 students of similarly minded parents from the Desert Ridge/Grayhawk areas.

In our 10th year of operations, we transport over 300 students to and from charter and private schools daily.

WHAT WE DO

A School Ride LLC is a licensed and insured transportation solution for students and their busy parents. Convenient pick-up and drop-off locations are close to students' homes and serve a growing student population.

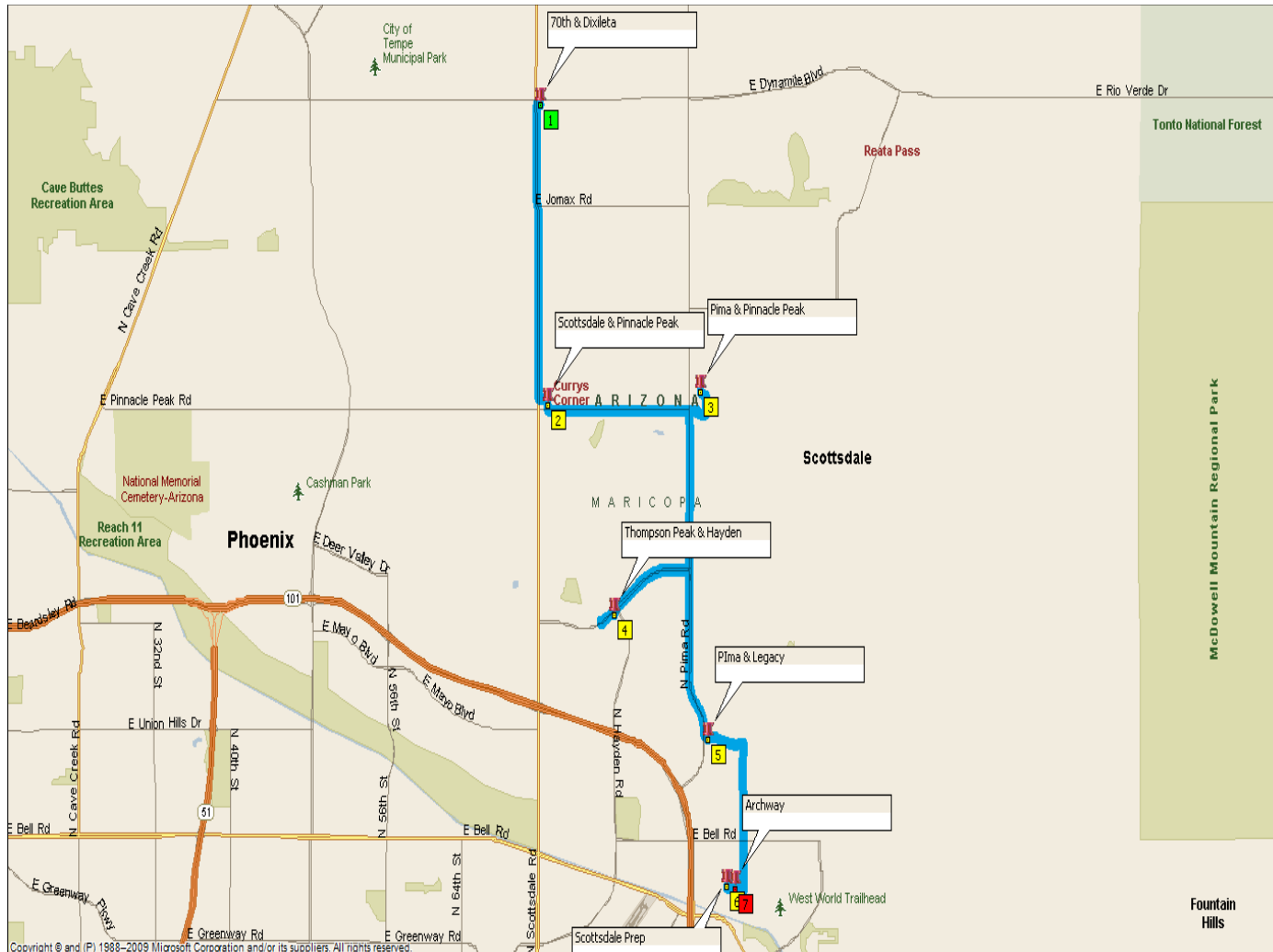
As a true "family owned" operation, we take our children's safety and education seriously—providing safe, reliable and on-time student transportation is what we do.

For further information, please visit our website at www.aschoolride.com



A SCHOOL RIDE LLC | 30013 N 70th Street, Scottsdale, AZ 85266 | Tel: (480) 515-0077 | www.aschoolride.com

N. SCOTTSDALE/N. PIMA ROUTE ACADEMIC YEAR 2018-2019

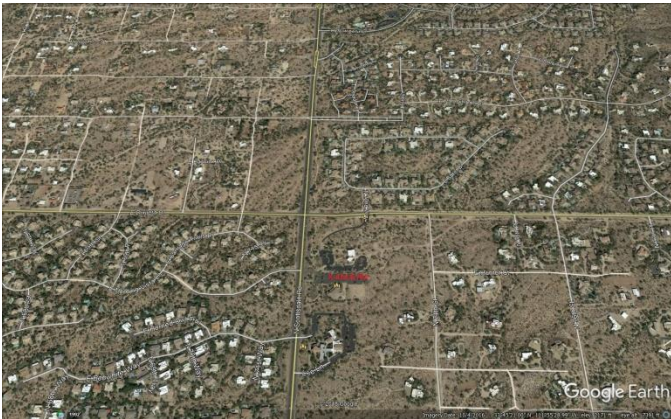




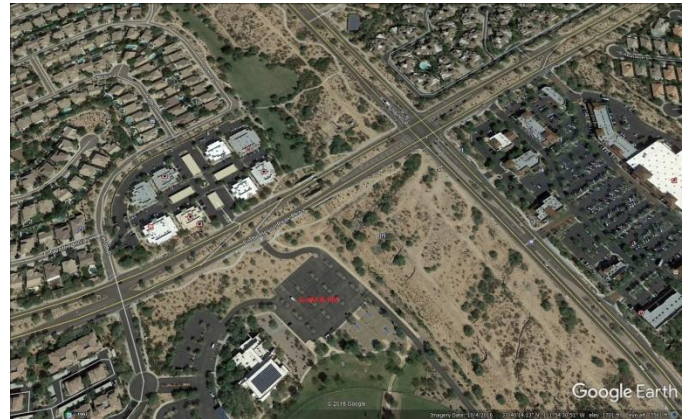
A SCHOOL RIDE LLC

ACADEMIC YEAR 2018-2019
N. SCOTTSDALE/N. PIMA ROUTE

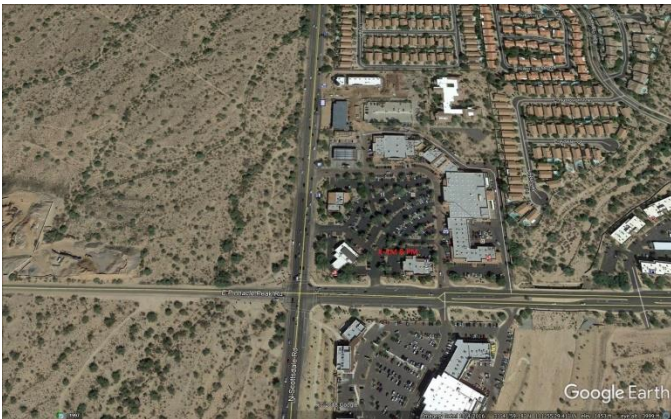
SCOTTSDALE RD & DIXILETA



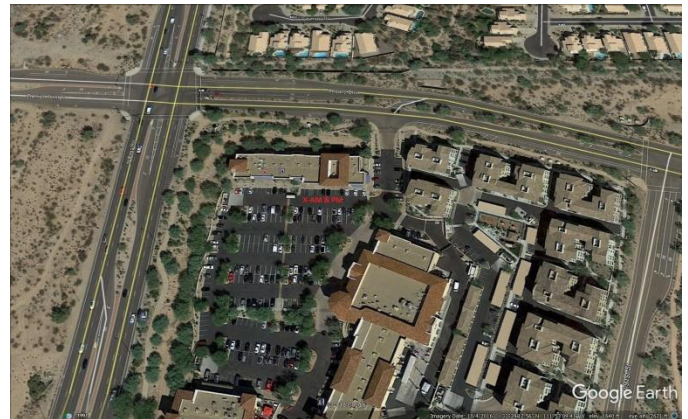
THOMPSON PEAK & HAYDEN



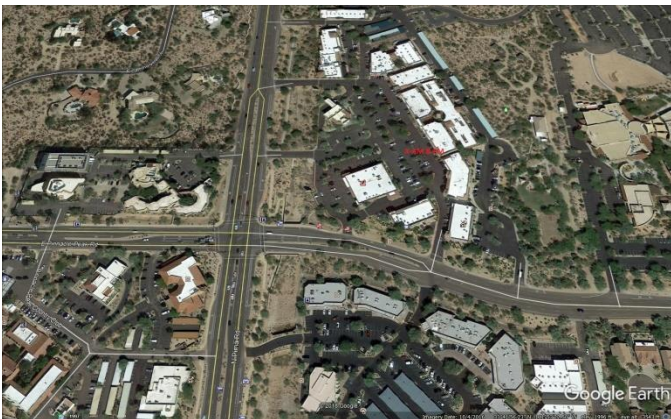
SCOTTSDALE RD & PINNACLE PEAK



PIMA & LEGACY



PIMA & PINNACLE PEAK





N. SCOTTSDALE/N. PIMA ROUTE		MORNING
STOP	PICKUP LOCATION	Departs @
Scottsdale Rd & Dixileta	Sonrise Community Church	7:16am
Scottsdale Rd & Pinnacle Peak	Wells Fargo Parking Lot	7:23am
Pima & Pinnacle Peak	Starbucks Parking lot	7:30pm
Thompson Peak & Hayden	Boys & Girls' Club	7:41am
Pima & Legacy	AJ's Parking Lot	7:41pm
ARRIVES TO SCOTTSDALE PREPARATORY ACADEMY		7:54am
ARRIVES TO ARCHWAY CLASSICAL ACADEMY-SCOTTSDALE		8:00am

WHO USES THE MORNING BUS?

All students at Scottsdale Preparatory Academy in grades 6, 7 and 8, and all students at Archway Classical Academy in grades K-5

N. SCOTTSDALE/N. PIMA ROUTE		AFTERNOON	
		1st bus	2nd bus
DEPARTS FROM ARCHWAY CLASSICAL ACADEMY-SCOTTSDALE		3:20pm	4:50pm
DEPARTS FROM SCOTTSDALE PREPARATORY ACADEMY		3:25pm	5:00pm
STOP	PICKUP LOCATION	Arrives @	Arrives @
Pima & Legacy	AJ's Parking Lot	3:31pm	5:06pm
Thompson Peak & Hayden	Boys & Girls' Club	3:47pm	5:22pm
Pima & Pinnacle Peak	Starbucks Parking lot	3:57pm	5:32pm
Scottsdale Rd & Pinnacle Peak	Wells Fargo Parking Lot	4:06pm	5:39pm
Scottsdale Rd & Dixileta	Sonrise Community Church	4:11pm	5:45pm

WHO USES THE 1st AFTERNOON BUS?

All students at Scottsdale Preparatory Academy in grades 6, 7 and 8, and all students at Archway Classical Academy in grades K-5

WHO USES THE 2nd AFTERNOON BUS?

All students at Scottsdale Preparatory Academy that stay for Extracurricular activities until 5:00pm and all students at Archway Classical Academy that stay for Extracurricular Activities until 4:45pm.