

## **A SCHOOL RIDE LLC** **Academic Year 2025-2026**

### **“AVIANO/BELL ROUTE”** **TO** **BASIS SCOTTSDALE & BASIS SCOTTSDALE PRIMARY-EAST**

- **ROUTE DESCRIPTION:** The “Aviano/Bell Route” to BASIS *Scottsdale* & BASIS *Scottsdale Primary-EAST* accommodates students living in the Aviano/Desert Ridge area, from Tatum & Dynamite to Aviano, and on the E. Bell Rd. Corridor, from Tatum & Bell to Scottsdale Rd and Frank Lloyd Wright. It accommodates students in grades K-11<sup>th</sup>.
- **PICKUP/DROPOFF POINTS** (see pictures of route stops included in this package):
  1. **Sky Crossing:** (at the Clubhouse on N. 32<sup>nd</sup> St. & E Sky Crossing Wy)
  2. **37<sup>th</sup> Way & Maffeo (Aneri’s stop):** (at the “green” on N. 37<sup>th</sup> Way and E. Maffeo)
  3. **Aviano Clubhouse:** (parking lot of the Aviano Clubhouse, near Rough Rider and 28<sup>th</sup> St)
  4. **Corner of N. Tatum Blvd & E. Bell Rd:** (behind McDonald’s-NE corner of intersection)
  5. **Corner of N. Scottsdale Rd. and E. Frank Lloyd Wright Blvd.:** (in front of ATRIA HEART-SE corner of intersection)

The route subsequently continues on E. Frank Lloyd Wright Blvd., and to the schools.  
Transportation is provided through a 28- to 35-passenger shuttle.



➤ **DAILY TRIPS** (see Tentative Route Schedule for timings)

- **ONE** trip in the morning to both schools, to accommodate students in grades K-12<sup>th</sup>.
- **TWO** trips in the afternoon to both schools, to accommodate students in grades K-12<sup>th</sup>.
- One “**on call**” afternoon trip (the 5:30pm bus) which will depart from the schools **NO LATER THAN 5:30pm**. The last afternoon trip does **NOT** accommodate after school programs that end **AFTER 5:30pm**. The last afternoon trip (the 5:30pm bus), does not run every day. It will run by **reservation made by texting or calling 602-206-3488 by 4:30pm** same day, and it services select stops.

➤ **PRICING**

- **\$4,095.00 annual cost per student**, round trip (10 monthly installments of \$409.50 per month, for the 10 months of the school year).
- An 8% discount is available for siblings (the annual cost for 2 siblings is **\$7,534.80**, and **\$11,302.20** for 3 siblings).
- A 5% discount will be available for early payment to the parents of the **first 3 students per route** that notify me they wish to prepay. **Please note the following:**
  - **All pre-payment checks need to be mailed in by June 15, 2025** at the latest, to the following mailing address:  
**A School Ride LLC  
30013 N. 70<sup>th</sup> Street  
Scottsdale, AZ 85266**
  - **Pre-payments are paid in the form of CHECK** (we do not accept credit cards for pre-payments). **No pre-payments will be accepted if they are received after June 20, 2025.**
  - **Alternatively, pre-payments can be paid through Zelle** using the e-mail address [geckman@aschoolride.com](mailto:geckman@aschoolride.com).

➤ **ROUTE REQUIREMENTS**

- In order to materialize for AY 2025-2026, the “Aviano/Bell” route needs a **minimum of 25 round trip students**.
- The **maximum capacity** of this route is 35 students if 1 shuttle is utilized, and 70 round trip students if two shuttles are utilized.
- An **Annual Transportation Service Agreement** and a **\$409.50 deposit** (or the discounted amount for siblings) is required to enroll.



## ➤ ENROLLMENT

- Enrollment documents and deposits for students wishing to travel “round trip” will be accepted on a **“first-come, first-served”** basis.
- Existing students **do not** retain their priority status from prior years. Existing students have to re-enroll with full set of documents and deposits.
- **Deposits will not be charged to credit cards, and deposit checks will not be cashed, until May 12, 2025, and only if the route ends up materializing in the Fall 2025. However, current credit card information and deposit checks must be on file.**

## ➤ ENROLLMENT START DATE AND DEADLINE TO ENROLL

- **Enrollment starts on Sunday, March 16, 2025**: Documents received BEFORE Sunday, March 16, will be processed on Sunday, March 16, in the order in which they were received.
- **The deadline to enroll** for round trip transportation to the “Aviano/Bell Route” for Academic Year 2025-2026 is **Sunday, May 4, 2025.**
- ***In the event this route fills up to its designed capacity of 35 students, a total of 25 additional students are required in order to place a 2nd shuttle into service.***

## ➤ CONTACT INFORMATION

Please contact us via phone or e-mail for more information:

**A School Ride LLC**

**Tel: (602) 621-6954**

**Dale Eckman: [deckman@aschoolride.com](mailto:deckman@aschoolride.com)**



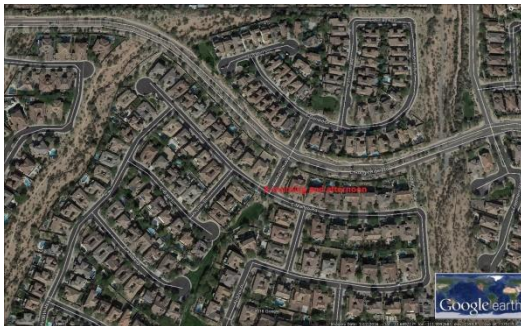
**AY 2025-2026 / ROUTE STOPS**  
(enlarge for better viewing)

**AVIANO/BELL ROUTE**

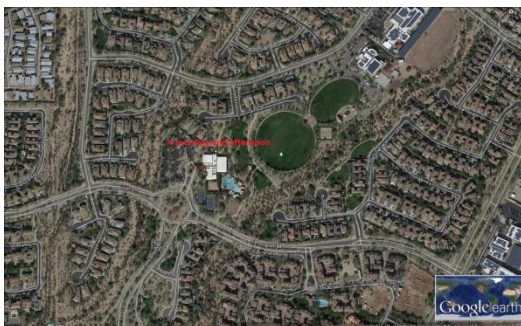
**1. Sky Crossing**



**2. 37<sup>th</sup> Way & Maffeo (morning only)**



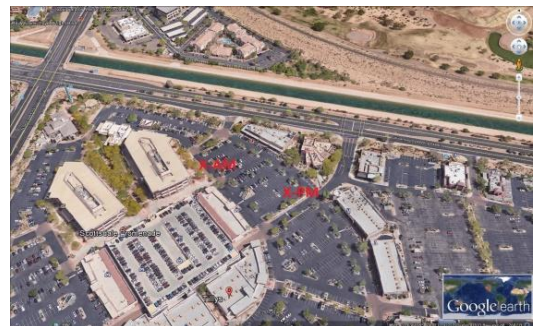
**3. Aviano Clubhouse**



**4. Tatum & Bell**



**5. Scottsdale Rd & FLW**





AVIANO/BELL ROUTE		MORNING (consolidated)
		1st Morning Bus
STOP	PICKUP LOCATION	Departs @
Sky Crossing	parking lot of Sky Crossing Clubhouse	6:32am
37th & Maffeo	Aneri's Stop	6:35am
Aviano Clubhouse	parking lot of Aviano Clubhouse	6:40am
Tatum & Bell	behind McDonald's	6:52am
Scottsdale Rd & FLW	ATRIA HEART parking lot at the Promenade	7:00am
ARRIVES TO BASIS SCOTTSDALE		7:20am
ARRIVES TO BASIS SCOTTSDALE PRIMARY		7:25am
		All Grades

AVIANO/BELL ROUTE		AFTERNOON		
		1st bus	2nd bus	3rd bus
DEPARTS FROM BASIS SCOTTSDALE PRIMARY		2:50pm	4:00pm	NA
DEPARTS FROM BASIS SCOTTSDALE		2:55pm	4:10pm	5:30pm
STOP	PICKUP LOCATION	Arrives @	Arrives @	Arrives @
Scottsdale Rd & FLW	ATRIA HEART parking lot at the Promenade	3:15pm	4:30pm	5:50pm
Tatum & Bell	behind McDonald's	3:22pm	4:38pm	5:59pm
Aviano Clubhouse	parking lot of Aviano Clubhouse	3:31pm	4:48pm	6:10pm
Sky Crossing	parking lot of Sky Crossing Clubhouse	3:38pm	4:53pm	6:15pm
		Full Day Kindergarten, 1st & 2nd Grades (Primary), 5th and 6th grades, and 9th through 11th with no afternoon electives	3rd & 4th Grades (Primary), Primary students with Extracurriculars, 5th & 6th Grades w/Student Hours, 7th & 8th Grades, and 9th through 11th w/PM electives	5th through 11th grades with Extracurriculars

## Notes:

The 37th & Maffeo stop exists in the morning trip, but not in the afternoon trips.

The last afternoon bus of the Aviano/Bell for AY 2024-2025 is the 5:30pm. Students staying at school after 5:30pm, have to make their own transportation arrangements.

**TEXT OR CALL (602) 621-6954 if you need the 5:30 bus. TEXT OR CALL by 4:00PM SAME DAY.**